



MIER COLLEGE OF EDUCATION (Autonomous)

College with Potential for Excellence Status by the UGC

Recognised by the J&K Govt. &

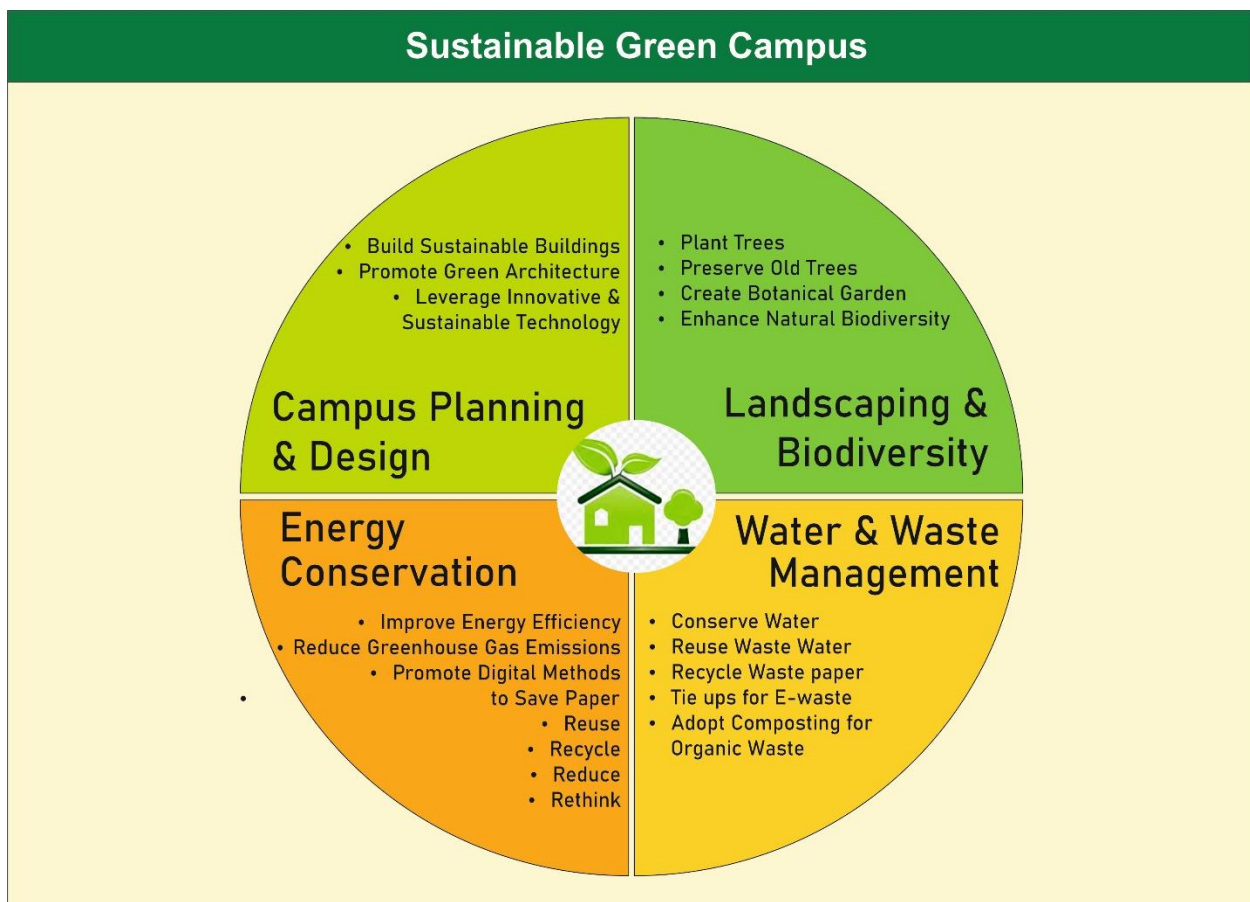
Permanently Affiliated to the University of Jammu

Accredited by the NAAC with 'A+' Grade

“Framework for Environmentally Sustainable and Green Campus Development”

In pursuance of the University Grants Commission’s campus sustainability framework which aims to guide HEIs to enable a sustainability transition and to transform them into a “living laboratory” for sustainable development, MIER College of Education has framed a policy document titled “Framework for Environmentally Sustainable and Green Campus Development”. This policy will serve as a guide for undertaking campus activities which can lead to building a green and sustainable campus environment.

The Framework:



This framework outlines the policies and practices that will help the college to achieve campus sustainability and ultimately facilitate the attainment of environmental, societal and economic rewards and benefits. The framework comprises the following initiatives and practices:

- **Campus planning, design and development**

The college shall:

- Accord top priority to ensuring high standards of environmental quality in the campus and implement environment friendly policies, with barrier free access.
- Prepare the master plan using a professionally surveyed map that depicts open, built-up, and green regions, as well as current and projected plantation plans for future development.
- Create a walkable campus by placing the majority of academic buildings within easy walking distance of one another.
- Maintain healthy, open and vegetated areas depending upon the availability of space and climatic conditions.
- Protect and conserve vegetated buffers as much as feasible during campus development, and conserve habitats of species of special concern.
- Construct buildings according to plan approved by expert architectural engineers with maximum possible windows for proper ventilation and lighting.
- Comply with all relevant environmental legislations and regulations and avoid as much as possible any unnecessary environmental impact on the surrounding landscape.

- **Landscaping and biodiversity**

The college shall:

- Ensure that all campus development is compatible with the surrounding natural environment.
- Protect and enhance the natural biodiversity of local areas and aim to conserve locally endangered flora and fauna.
- Plant more trees and create vegetated buffers.
- Value old trees and their habitat role for birds and other forms of organisms.
- Maintain a botanical garden.
- Have adequate support staff, who looks into the maintenance of gardens, lawns and other aspects of environment.

- **Energy Conservation**

The college shall:

- Reduce greenhouse gas emissions through reducing energy consumption and shifting to energy-efficient devices, as well as clean and sustainable energy sources including solar, wind and biogas.
- Establish criteria for heating, ventilation, and air conditioning (HVAC) systems. Replace inefficient air conditioners and heaters with more energy-efficient models.
- Install energy efficient lights.
- Sensitize the staff and students regarding switching off the fans, lights, AC's, LCDs etc. when not in use to save energy resources.
- Create a pollution free environment by ensuring placement of dustbins for efficient garbage disposal, adequate water supply (through its own deep bore well) to the toilets and other parts of the college building.
- Declare the campus as "No Smoking Zone" as per UGC guidelines.
- Maximise the use of recyclable and reusable materials.
- Create a digital repository of all official documents to save paper and upload the same on the internal server of the college for the convenience of the employees and other interested parties.

- Use digital banners, reuse one sided printed papers and adopt “think before you print’ attitude.
 - Reduce the number of printed publications and documents by disseminating information and news via electronic and online means. If printing is necessary, print both sides of the paper and utilise recycled paper to cut down on the number of pages and quantity.
 - Use obsolete documents in the composting process and purchase file covers made from recycled papers.
 - Gift green souvenirs and use reusable food-ware to serve food during events.
 - Have a dedicated environment unit which will organise programmes related to environmental sustenance and upkeep. The unit will also organise outreach programmes for the community and create awareness and sensitization about various environmental issues to general public.
- **Waste and water management**
The college shall:
 - Direct all stakeholders to take the ethical responsibility in reducing individual waste generation based on the waste management motto: Reduce, Reuse and Recycle.
 - Communicate the college's waste management policy to employees, students, and other campus agencies so that everyone is aware of the college's waste management plan.
 - Use on-site composting of food and garden waste for reuse on campus grounds.
 - Segregate waste as bio-degradable and non-degradable and keep waste bins at all places in the campus, including classrooms.
 - Have an efficient and effective water distribution system in the campus.
 - Capture and re-use rainwater for non-potable uses.
 - Promote a water self-sufficient campus.

Under this framework, the college has the responsibility to ensure that regular reviews of all sustainability measures and initiative are done from time to time so that the measures are not only implemented but also monitored. A campus wide audit of sustainability practices shall be conducted to track and maintain sustainability performance.



Dr Adit Gupta
Principal